



TEST REPORT

REPORT No.: **DTIBW20200954R**

Date: 2020-10-21

Page 1 of 26

Applicant Company Name: **Bitwave Pte Ltd**

Applicant Company Address: **11 Serangoon North Ave 5, #05-03, Singapore 554809**

The following sample(s) was/were submitted and identified on behalf of the client as:

Sample Name : Bluetooth Helmet Communicator
 Model No. : EXO-COM
 Trademark : UCclear Digital
 Buyer : SPC
 Sample Receiving Date : October 14, 2020; October 20, 2020
 Testing Period : From October 14, 2020 to October 21, 2020
 Results : Please refer to next page(s).

Summary of Test Results:

TEST REQUEST

A EU RoHS Directive 2011/65/EU and its amendment directives 2015/863/EU (**RoHS 2.0**)

Pass

CONCLUSION

Shenzhen Deesev Testing International Corp

Approved by: Tommy Jiang
lab manager



This document is issued by the Company subject to its General Conditions of service of service printed overleaf, available on request for electronic format documents, subject to terms and conditions for electronic documents is drawn to the limitation of liability indemnification and jurisdiction issues defined therein. any holder of this document is advised that information contained hereon reflects the company's findings at the time of its intervention only and within the limits of client's instructions, if any, the company's sole responsibility is to its client and this document does not exonerate parties to a transaction from exercising all their rights and obligations under the transaction documents. this document cannot be reproduced except in full, without prior written approval of the company. any unauthorized alteration, forgery or falsification of the content or appearance of this document is unlawful and offenders may be prosecuted to the fullest extent of the law unless otherwise stated the results shown in this test report refer only to the sample(s) tested.



Shenzhen Deesev Testing International Corp.
深圳市德泽威技术检测有限公司

9th Flr., Building B, Feiyang Science & Technology Park, Longchang Rd. No.8, Bao'an, Shenzhen, Guangdong, China
中国广东省深圳市宝安区隆昌路8号飞扬科技园B座9楼
Tel: +86-0755-32936716, E-mail: DTI@deesev.cn



TEST REPORT

REPORT No.: **DTIBW20200954R**

Date: 2020-10-21

Page 2 of 26

Results:

1、EU RoHS Directive 2011/65/EU and its amendment directives on XRF

Test method: With reference to IEC 62321-3-1:2013, Screening by X-ray Fluorescence Spectroscopy (XRF)

Seq. No.	Tested Part(s)	Results				
		Pb	Cd	Hg	Cr	Br
1	Black Plastic Shell	BL	BL	BL	BL	BL
2	Black Plastic Cover	BL	BL	BL	BL	BL
3	Yellow Plastic Sticker	BL	BL	BL	BL	BL
4	Electrode Metal Sheet	BL	BL	BL	BL	BL
5	Aluminum Laminated Films	BL	BL	BL	BL	BL
6	Polymer Membranes	BL	BL	BL	BL	BL
7	Green Plastic Sticker	BL	BL	BL	BL	BL
8	White Plastic Sticker	BL	BL	BL	BL	BL
9	Copper Foil	BL	BL	BL	BL	BL
10	Aluminum Foil	BL	BL	BL	BL	BL
11	Thermistor	BL	BL	BL	BL	BL
12	Enamelled Copper Wire	BL	BL	BL	BL	BL
13	PCB	BL	BL	BL	BL	X
14	Solder Point	BL	BL	BL	BL	BL
15	Silver Metal Case	BL	BL	BL	X	BL
16	Internal Black Plastic	BL	BL	BL	BL	BL
17	Silver Metal Needles	BL	BL	BL	BL	BL
18	Patch LED	BL	BL	BL	BL	BL
19	Black Ceramic Body Chip	BL	BL	BL	BL	BL
20	Patch Resistor	BL	BL	BL	BL	BL



This document is issued by the Company subject to its General Conditions of service of service printed overleaf, available on request for electronic format documents, subject to terms and conditions for electronic documents is drawn to the limitation of liability indemnification and jurisdiction issues defined therein. any holder of this document is advised that information contained hereon reflects the company's findings at the time of its intervention only and within the limits of client's instructions, if any, the company's sole responsibility is to its client and this document does not exonerate parties to a transaction from exercising all their rights and obligations under the transaction documents. this document cannot be reproduced except in full, without prior written approval of the company. any unauthorized alteration, forgery or falsification of the content or appearance of this document is unlawful and offenders may be prosecuted to the fullest extent of the law unless otherwise stated the results shown in this test report refer only to the sample(s) tested.



Shenzhen Deesev Testing International Corp.
深圳市德泽威技术检测有限公司

9th Flr., Building B, Feiyang Science & Technology Park, Longchang Rd.No.8,Bao'an,Shenzhen, Guangdong, China
中国 广东省 深圳市 宝安区 隆昌路 8号 飞扬科技园 B座9楼
Tel: +86-0755-32936716, E-mail: DTI@deesev.cn



TEST REPORT

REPORT No.: **DTIBW20200954R**

Date: 2020-10-21

Page 3 of 26

Seq. No.	Tested Part(s)	Results				
		Pb	Cd	Hg	Cr	Br
21	Multiplayer Ceramic Chip Capacitors	BL	BL	BL	BL	BL
22	Black Plastic Cover	BL	BL	BL	BL	BL
23	Black Plastic Shell	BL	BL	BL	BL	BL
24	Silver Metal Screws	BL	BL	BL	BL	BL
25	PCB	BL	BL	BL	BL	X
26	Solder Point	X	BL	BL	BL	BL
27	Black Ceramic Body Chip	BL	BL	BL	BL	BL
28	Patch Resistor	BL	BL	BL	BL	BL
29	Multiplayer Ceramic Chip Capacitors	BL	BL	BL	BL	BL
30	SMD Components	BL	BL	BL	BL	BL
31	Crystal Oscillator	BL	BL	BL	BL	BL
32	Beige Plastic Plug-Base	BL	BL	BL	BL	BL
33	Silver Metal Terminal	BL	BL	BL	BL	BL
34	Silver Metal Case (Switch Cover)	BL	BL	BL	BL	BL
35	Beige Plastic Shell (Touch Switch)	BL	BL	BL	BL	BL
36	Beige Plastic Button (Touch Switch)	BL	BL	BL	BL	BL
37	Silver Metal Sheet (Touch Switch)	BL	BL	BL	BL	BL
38	Black Ceramic Body Chip	BL	BL	BL	BL	BL
39	Patch Resistor	BL	BL	BL	BL	BL
40	Multiplayer Ceramic Chip Capacitors	BL	BL	BL	BL	BL



This document is issued by the Company subject to its General Conditions of service of service printed overleaf, available on request for electronic format documents, subject to terms and conditions for electronic documents is drawn to the limitation of liability indemnification and jurisdiction issues defined therein. any holder of this document is advised that information contained hereon reflects the company's findings at the time of its intervention only and within the limits of client's instructions, if any, the company's sole responsibility is to its client and this document does not exonerate parties to a transaction from exercising all their rights and obligations under the transaction documents. this document cannot be reproduced except in full, without prior written approval of the company. any unauthorized alteration, forgery or falsification of the content or appearance of this document is unlawful and offenders may be prosecuted to the fullest extent of the law unless otherwise stated the results shown in this test report refer only to the sample(s) tested.



Shenzhen Deesev Testing International Corp.
 深圳市德泽威技术检测有限公司

9th Flr., Building B, Feiyang Science & Technology Park, Longchang Rd. No.8, Bao'an, Shenzhen, Guangdong, China
 中国广东省深圳市宝安区隆昌路8号飞扬科技园B座9楼
 Tel: +86-0755-32936716, E-mail: DTI@deesev.cn



TEST REPORT

REPORT No.: **DTIBW20200954R**

Date: 2020-10-21

Page 4 of 26

Seq. No.	Tested Part(s)	Results				
		Pb	Cd	Hg	Cr	Br
41	Patch LED	BL	BL	BL	BL	BL
42	Silver Metal Case (Switch Cover)	BL	BL	BL	BL	BL
43	Black Plastic Shell (Touch Switch)	BL	BL	BL	BL	BL
44	White Plastic Button (Touch Switch)	BL	BL	BL	BL	BL
45	Silver Metal Sheet (Touch Switch)	BL	BL	BL	BL	BL
46	Black Plastic Fasteners	BL	BL	BL	BL	BL
47	Black Plastic Skin	BL	BL	BL	BL	BL
48	Black Plastic Wire Outer Skin	BL	BL	BL	BL	BL
49	Red Plastic Wire Outer Skin	BL	BL	BL	BL	BL
50	Green Plastic Wire Outer Skin	BL	BL	BL	BL	BL
51	White Plastic Wire Outer Skin	BL	BL	BL	BL	BL
52	Yellow Plastic Wire Outer Skin	BL	BL	BL	BL	BL
53	Blue Plastic Wire Outer Skin	BL	BL	BL	BL	BL
54	Orange Plastic Wire Outer Skin	BL	BL	BL	BL	BL
55	Brown Plastic Wire Outer Skin	BL	BL	BL	BL	BL
56	Gray Plastic Wire Outer Skin	BL	BL	BL	BL	BL
57	Wire Internal Metal Wire	BL	BL	BL	BL	BL
58	White Plastic Plug-In	BL	BL	BL	BL	BL
59	Silver Metal Terminal	BL	BL	BL	BL	BL
60	Black Soft Plastics	BL	BL	BL	BL	BL



This document is issued by the Company subject to its General Conditions of service of service printed overleaf, available on request for electronic format documents, subject to terms and conditions for electronic documents is drawn to the limitation of liability indemnification and jurisdiction issues defined therein. any holder of this document is advised that information contained hereon reflects the company's findings at the time of its intervention only and within the limits of client's instructions, if any, the company's sole responsibility is to its client and this document does not exonerate parties to a transaction from exercising all their rights and obligations under the transaction documents. this document cannot be reproduced except in full, without prior written approval of the company. any unauthorized alteration, forgery or falsification of the content or appearance of this document is unlawful and offenders may be prosecuted to the fullest extent of the law unless otherwise stated the results shown in this test report refer only to the sample(s) tested.



Shenzhen Deesev Testing International Corp.
 深圳市德泽威技术检测有限公司

9th Flr., Building B, Feiyang Science & Technology Park, Longchang Rd. No.8, Bao'an, Shenzhen, Guangdong, China
 中国广东省深圳市宝安区隆昌路8号飞扬科技园B座9楼
 Tel: +86-0755-32936716, E-mail: DTI@deesev.cn



TEST REPORT

REPORT No.: **DTIBW20200954R**

Date: 2020-10-21

Page 5 of 26

Seq. No.	Tested Part(s)	Results				
		Pb	Cd	Hg	Cr	Br
61	Internal Translucent Plastic	BL	BL	BL	BL	BL
62	Silver Metal Case	BL	BL	BL	X	BL
63	Internal Black Plastic	BL	BL	BL	BL	BL
64	Silver Metal Needles	BL	BL	BL	BL	BL
65	PCB	BL	BL	BL	BL	X
66	Solder Point	BL	BL	BL	BL	BL
67	Black Soft Plastics	BL	BL	BL	BL	BL
68	Internal Translucent Plastic	BL	BL	BL	BL	BL
69	Silver Metal Case	X	BL	BL	X	BL
70	Internal Black Plastic	BL	BL	BL	BL	BL
71	Silver Metal Needles	BL	BL	BL	BL	BL
72	PCB	BL	BL	BL	BL	X
73	Solder Point	BL	BL	BL	BL	BL
74	Black Plastic	BL	BL	BL	BL	BL
75	Double Faced Adhesive	BL	BL	BL	BL	BL
76	Black Sponge	BL	BL	BL	BL	BL
77	White Coating	BL	BL	BL	BL	BL
78	Black Plastic Frame	BL	BL	BL	BL	BL
79	Black Plastic Cover	BL	BL	BL	BL	BL
80	Transparent Plastic	BL	BL	BL	BL	BL



This document is issued by the Company subject to its General Conditions of service of service printed overleaf, available on request for electronic format documents, subject to terms and conditions for electronic documents is drawn to the limitation of liability indemnification and jurisdiction issues defined therein. any holder of this document is advised that information contained hereon reflects the company's findings at the time of its intervention only and within the limits of client's instructions, if any, the company's sole responsibility is to its client and this document does not exonerate parties to a transaction from exercising all their rights and obligations under the transaction documents. this document cannot be reproduced except in full, without prior written approval of the company. any unauthorized alteration, forgery or falsification of the content or appearance of this document is unlawful and offenders may be prosecuted to the fullest extent of the law unless otherwise stated the results shown in this test report refer only to the sample(s) tested.



Shenzhen Deesev Testing International Corp.
 深圳市德泽威技术检测有限公司

9th Flr., Building B, Feiyang Science & Technology Park, Longchang Rd. No.8, Bao'an, Shenzhen, Guangdong, China
 中国 广东省 深圳市 宝安区 隆昌路 8号 飞扬科技园 B座9楼
 Tel: +86-0755-32936716, E-mail: DTI@deesev.cn



TEST REPORT

REPORT No.: **DTIBW20200954R**

Date: 2020-10-21

Page 6 of 26

Seq. No.	Tested Part(s)	Results				
		Pb	Cd	Hg	Cr	Br
81	Copper Wire	BL	BL	BL	BL	BL
82	Silver Magnet	BL	BL	BL	BL	BL
83	Silver Metal Case	BL	BL	BL	BL	BL
84	Black Plastic Case	BL	BL	BL	BL	BL
85	Green Fiberboard	BL	BL	BL	BL	X
86	Solder Point	BL	BL	BL	BL	BL
87	Black Viscose	BL	BL	BL	BL	BL
88	Black Plastic Cover	BL	BL	BL	BL	BL
89	Black Metal Screws	BL	BL	BL	BL	BL
90	Yellow Label Stickers	BL	BL	BL	BL	BL
91	Black Soft Plastics	BL	BL	BL	BL	BL
92	Internal Translucent Plastic	BL	BL	BL	BL	BL
93	Silver Metal Case	X	BL	BL	X	BL
94	Internal Black Plastic	BL	BL	BL	BL	BL
95	Silver Metal Needles	BL	BL	BL	BL	BL
96	PCB	BL	BL	BL	BL	X
97	Solder Point	BL	BL	BL	BL	BL
98	Black Plastic	BL	BL	BL	BL	BL
99	Black Plastic Fasteners	BL	BL	BL	BL	BL
100	Black Plastic Skin	BL	BL	BL	BL	BL



This document is issued by the Company subject to its General Conditions of service of service printed overleaf, available on request for electronic format documents, subject to terms and conditions for electronic documents is drawn to the limitation of liability indemnification and jurisdiction issues defined therein. any holder of this document is advised that information contained hereon reflects the company's findings at the time of its intervention only and within the limits of client's instructions, if any, the company's sole responsibility is to its client and this document does not exonerate parties to a transaction from exercising all their rights and obligations under the transaction documents. this document cannot be reproduced except in full, without prior written approval of the company. any unauthorized alteration, forgery or falsification of the content or appearance of this document is unlawful and offenders may be prosecuted to the fullest extent of the law unless otherwise stated the results shown in this test report refer only to the sample(s) tested.



Shenzhen Deesev Testing International Corp.
 深圳市德泽威技术检测有限公司

9th Flr., Building B, Feiyang Science & Technology Park, Longchang Rd. No.8, Bao'an, Shenzhen, Guangdong, China
 中国 广东省 深圳市 宝安区 隆昌路 8号 飞扬科技园 B座9楼
 Tel: +86-0755-32936716, E-mail: DTI@deesev.cn



TEST REPORT

REPORT No.: **DTIBW20200954R**

Date: 2020-10-21

Page 7 of 26

Seq. No.	Tested Part(s)	Results				
		Pb	Cd	Hg	Cr	Br
101	Black Plastic Wire Outer Skin	BL	BL	BL	BL	BL
102	Red Plastic Wire Outer Skin	BL	BL	BL	BL	BL
103	Wire Internal Metal Wire	BL	BL	BL	BL	BL
104	Red Plastic Wire Outer Skin	BL	BL	BL	BL	BL
105	Gold Plastic Wire Outer Skin	BL	BL	BL	BL	BL
106	Green Plastic Wire Outer Skin	BL	BL	BL	BL	BL
107	Blue Plastic Wire Outer Skin	BL	BL	BL	BL	BL
108	Wire Internal Metal Wire	BL	BL	BL	BL	BL



This document is issued by the Company subject to its General Conditions of service of service printed overleaf, available on request for electronic format documents, subject to terms and conditions for electronic documents is drawn to the limitation of liability indemnification and jurisdiction issues defined therein, any holder of this document is advised that information contained hereon reflects the company's findings at the time of its intervention only and within the limits of client's instructions, if any, the company's sole responsibility is to its client and this document does not exonerate parties to a transaction from exercising all their rights and obligations under the transaction documents, this document cannot be reproduced except in full, without prior written approval of the company, any unauthorized alteration, forgery or falsification of the content or appearance of this document is unlawful and offenders may be prosecuted to the fullest extent of the law unless otherwise stated the results shown in this test report refer only to the sample(s) tested.



Shenzhen Deesev Testing International Corp.
 深圳市德泽威技术检测有限公司

9th Flr., Building B, Feiyang Science & Technology Park, Longchang Rd.No.8,Bao'an,Shenzhen, Guangdong, China
 中国 广东省 深圳市 宝安区 隆昌路 8号 飞扬科技园 B座9楼
 Tel: +86-0755-32936716, E-mail: DTI@deesev.cn



TEST REPORT

REPORT No.: **DTIBW20200954R**

Date: 2020-10-21

Page 8 of 26

Remark:

- (1) Results were obtained by XRF for primary screening, and further chemical testing by ICP (for Cd, Pb, Hg), UV-Vis (for Cr(VI)) and GC-MS (for PBBs, PBDEs) are recommended to be performed, if the concentration exceeds the below warning value according to IEC 62321-3-1:2013.

Element	Unit	Non-metal	Metal	Composite Material
Cd	mg/kg	$BL \leq 70 - 3\sigma < X < 130 + 3\sigma \leq OL$	$BL \leq 70 - 3\sigma < X < 130 + 3\sigma \leq OL$	$BL \leq 50 - 3\sigma < X < 150 + 3\sigma \leq OL$
Pb	mg/kg	$BL \leq 700 - 3\sigma < X < 1300 + 3\sigma \leq OL$	$BL \leq 700 - 3\sigma < X < 1300 + 3\sigma \leq OL$	$BL \leq 500 - 3\sigma < X < 1500 + 3\sigma \leq OL$
Hg	mg/kg	$BL \leq 700 - 3\sigma < X < 1300 + 3\sigma \leq OL$	$BL \leq 700 - 3\sigma < X < 1300 + 3\sigma \leq OL$	$BL \leq 500 - 3\sigma < X < 1500 + 3\sigma \leq OL$
Cr	mg/kg	$BL \leq 700 - 3\sigma < X$	$BL \leq 700 - 3\sigma < X$	$BL \leq 500 - 3\sigma < X$
Br	mg/kg	$BL \leq 300 - 3\sigma < X$	--	$BL \leq 250 - 3\sigma < X$

Note:

- BL = Below Limit
 OL = Over Limit
 X = Inconclusive

- (2) The XRF screening test for RoHS elements – The reading may be different to the actual content in the sample be of non-uniformity composition.



This document is issued by the Company subject to its General Conditions of service of service printed overleaf, available on request for electronic format documents, subject to terms and conditions for electronic documents is drawn to the limitation of liability indemnification and jurisdiction issues defined therein. any holder of this document is advised that information contained hereon reflects the company's findings at the time of its intervention only and within the limits of client's instructions, if any, the company's sole responsibility is to its client and this document does not exonerate parties to a transaction from exercising all their rights and obligations under the transaction documents. this document cannot be reproduced except in full, without prior written approval of the company. any unauthorized alteration, forgery or falsification of the content or appearance of this document is unlawful and offenders may be prosecuted to the fullest extent of the law unless otherwise stated the results shown in this test report refer only to the sample(s) tested.



Shenzhen Deesev Testing International Corp.
 深圳市德泽威技术检测有限公司

9th Flr., Building B, Feiyang Science & Technology Park, Longchang Rd. No.8, Bao'an, Shenzhen, Guangdong, China
 中国广东省深圳市宝安区隆昌路8号飞扬科技园B座9楼
 Tel: +86-0755-32936716, E-mail: DTI@deesev.cn



TEST REPORT

REPORT No.: **DTIBW20200954R**

Date: 2020-10-21

Page 9 of 26

(3) The maximum permissible limit is quoted from the document 2011/65/EU and its amendment directives 2015/863/EU:

RoHS Restricted Substances	Maximum Concentration Value (mg/kg) (by weight in homogenous materials)
Cadmium (Cd)	≤100
Lead (Pb)	≤1000
Mercury (Hg)	≤1000
Hexavalent Chromium (Cr(VI))	≤1000
Polybrominated biphenyls (PBBs)	≤1000
Polybrominate ddiphenylethers (PBDEs)	≤1000



This document is issued by the Company subject to its General Conditions of service of service printed overleaf, available on request for electronic format documents, subject to terms and conditions for electronic documents is drawn to the limitation of liability indemnification and jurisdiction issues defined therein. any holder of this document is advised that information contained hereon reflects the company's findings at the time of its intervention only and within the limits of client's instructions, if any, the company's sole responsibility is to its client and this document does not exonerate parties to a transaction from exercising all their rights and obligations under the transaction documents. this document cannot be reproduced except in full, without prior written approval of the company. any unauthorized alteration, forgery or falsification of the content or appearance of this document is unlawful and offenders may be prosecuted to the fullest extent of the law unless otherwise stated the results shown in this test report refer only to the sample(s) tested.



Shenzhen Deesev Testing International Corp.
深圳市德泽威技术检测有限公司

9th Flr., Building B, Feiyang Science & Technology Park, Longchang Rd.No.8,Bao'an,Shenzhen, Guangdong, China
中国 广东省 深圳市 宝安区 隆昌路 8号 飞扬科技园 B座9楼
Tel: +86-0755-32936716, E-mail: DTI@deesev.cn



TEST REPORT

REPORT No.: **DTIBW20200954R**

Date: 2020-10-21

Page 10 of 26

2. The Test Results of Chemical Method:

Test method:

Lead, Cadmium, Mercury Content:

With reference to IEC 62321-5:2013 and IEC62321-4:2013+AMD1:2017, by acid digestion and analysis was performed by Inductively Coupled Plasma- Atomic Emission Spectrophotometer (ICP-AES)

Hexavalent Chromium Content (For metal material):

With reference to IEC 62321-7-1:2015, by boiling-water-extraction and analysis was performed by UV-visible spectrophotometer (UV-Vis)

Hexavalent Chromium Content (For non-metal material):

With reference to IEC 62321-7-2:2017, by alkaline digestion and analysis was performed by UV-visible spectrophotometer (UV-Vis)

PBBs & PBDEs Content:

With reference to IEC 62321-6:2015, by solvent extraction and analysis was performed by gas chromatographic/mass spectrometer (GC-MS)

DEHP, BBP, DBP&.DIBP content:

With reference to IEC 62321-8:2017 by solvent extraction and analysis was performed by gas chromatographic-mass spectrometer (GC-MS)



This document is issued by the Company subject to its General Conditions of service of service printed overleaf, available on request for electronic format documents, subject to terms and conditions for electronic documents is drawn to the limitation of liability indemnification and jurisdiction issues defined therein. any holder of this document is advised that information contained hereon reflects the company's findings at the time of its intervention only and within the limits of client's instructions, if any, the company's sole responsibility is to its client and this document does not exonerate parties to a transaction from exercising all their rights and obligations under the transaction documents. this document cannot be reproduced except in full, without prior written approval of the company. any unauthorized alteration, forgery or falsification of the content or appearance of this document is unlawful and offenders may be prosecuted to the fullest extent of the law unless otherwise stated the results shown in this test report refer only to the sample(s) tested.



Shenzhen Deesev Testing International Corp.
深圳市德泽威技术检测有限公司

9th Flr., Building B, Feiyang Science & Technology Park, Longchang Rd.No.8,Bao'an,Shenzhen, Guangdong, China
中国 广东省 深圳市 宝安区 隆昌路 8号 飞扬科技园 B座9楼
Tel: +86-0755-32936716, E-mail: DTI@deesev.cn



TEST REPORT

REPORT No.: **DTIBW20200954R**

Date: 2020-10-21

Page 11 of 26

1) The test results of Cr (VI)

Item	Unit	MDL	Results			Limit
			15	62	69	
Hexavalent Chromium (Cr (VI)) (Metal material)	µg/cm ²	/	Negative	Negative	Negative	#
Conclusion	/	/	Pass	Pass	Pass	/

Note:

- N.D. = Not Detected or less than MDL
- MDL = Method Detection Limit
- Negative= Sample Cr(VI) concentration is less than 0.10 µg/cm²
Positive = Sample Cr(VI) concentration is greater than 0.13 µg/cm²
- # =
Positive indicates the presence of Cr(VI) on the tested areas and the test results are considered to be incompatible with Directive 2011/65/EU (RoHS 2.0) requirement.
Negative indicates the absence of Cr(VI) on the tested areas and the test results are considered to be consistent with Directive 2011/65/EU (RoHS 2.0) requirement.
- mg/kg = ppm



This document is issued by the Company subject to its General Conditions of service of service printed overleaf, available on request for electronic format documents, subject to terms and conditions for electronic documents is drawn to the limitation of liability indemnification and jurisdiction issues defined therein, any holder of this document is advised that information contained hereon reflects the company's findings at the time of its intervention only and within the limits of client's instructions, if any, the company's sole responsibility is to its client and this document does not exonerate parties to a transaction from exercising all their rights and obligations under the transaction documents, this document cannot be reproduced except in full, without prior written approval of the company, any unauthorized alteration, forgery or falsification of the content or appearance of this document is unlawful and offenders may be prosecuted to the fullest extent of the law unless otherwise stated the results shown in this test report refer only to the sample(s) tested.



Shenzhen Deesev Testing International Corp.
深圳市德泽威技术检测有限公司

9th Flr., Building B, Feiyang Science & Technology Park, Longchang Rd.No.8, Bao'an, Shenzhen, Guangdong, China
中国广东省深圳市宝安区隆昌路8号飞扬科技园B座9楼
Tel: +86-0755-32936716, E-mail: DTI@deesev.cn



TEST REPORT

REPORT No.: **DTIBW20200954R**

Date: 2020-10-21

Page 12 of 26

2) The test results of Pb

Item	Unit	MDL	Results			Limit
			26*	69	93	
Lead(Pb)	mg/kg	2	N.D.	49	56	≤1000
Conclusion	/	/	Pass	Pass	Pass	/

Note:

- N.D. = Not Detected or less than MDL
- MDL = Method Detection Limit
- mg/kg = ppm
- * = This data is the corrected retest data.



This document is issued by the Company subject to its General Conditions of service of service printed overleaf, available on request for electronic format documents, subject to terms and conditions for electronic documents is drawn to the limitation of liability indemnification and jurisdiction issues defined therein. any holder of this document is advised that information contained hereon reflects the company's findings at the time of its intervention only and within the limits of client's instructions, if any, the company's sole responsibility is to its client and this document does not exonerate parties to a transaction from exercising all their rights and obligations under the transaction documents. this document cannot be reproduced except in full, without prior written approval of the company. any unauthorized alteration, forgery or falsification of the content or appearance of this document is unlawful and offenders may be prosecuted to the fullest extent of the law unless otherwise stated the results shown in this test report refer only to the sample(s) tested.



Shenzhen Deesev Testing International Corp.
 深圳市德泽威技术检测有限公司

9th Flr., Building B, Feiyang Science & Technology Park, Longchang Rd.No.8,Bao'an,Shenzhen, Guangdong, China
 中国 广东省 深圳市 宝安区 隆昌路 8号 飞扬科技园 B座9楼
 Tel: +86-0755-32936716, E-mail: DTI@deesev.cn



TEST REPORT

REPORT No.: **DTIBW20200954R**

Date: 2020-10-21

Page 13 of 26

3) The test results of PBBs & PBDEs

Item	Unit	MDL	Results					Limit
			13	25	65	72	85	
Polybrominated Biphenyls (PBBs)								
Monobromobiphenyl	mg/kg	5	N.D.	N.D.	N.D.	N.D.	N.D.	/
Dibromobiphenyl	mg/kg	5	N.D.	N.D.	N.D.	N.D.	N.D.	/
Tribromobiphenyl	mg/kg	5	N.D.	N.D.	N.D.	N.D.	N.D.	/
Tetrabromobiphenyl	mg/kg	5	N.D.	N.D.	N.D.	N.D.	N.D.	/
Pentabromobiphenyl	mg/kg	5	N.D.	N.D.	N.D.	N.D.	N.D.	/
Hexabromobiphenyl	mg/kg	5	N.D.	N.D.	N.D.	N.D.	N.D.	/
Heptabromobiphenyl	mg/kg	5	N.D.	N.D.	N.D.	N.D.	N.D.	/
Octabromobiphenyl	mg/kg	5	N.D.	N.D.	N.D.	N.D.	N.D.	/
Nonabromodiphenyl	mg/kg	5	N.D.	N.D.	N.D.	N.D.	N.D.	/
Decabromodiphenyl	mg/kg	5	N.D.	N.D.	N.D.	N.D.	N.D.	/
Total content	mg/kg	/	N.D.	N.D.	N.D.	N.D.	N.D.	≤1000
Polybrominated Diphenylethers (PBDEs)(Mon-Deca)								
Monobromodiphenyl ether	mg/kg	5	N.D.	N.D.	N.D.	N.D.	N.D.	/
Dibromodiphenyl ether	mg/kg	5	N.D.	N.D.	N.D.	N.D.	N.D.	/
Tribromodiphenyl ether	mg/kg	5	N.D.	N.D.	N.D.	N.D.	N.D.	/
Tetrabromodiphenyl ether	mg/kg	5	N.D.	N.D.	N.D.	N.D.	N.D.	/
Pentabromodiphenyl ether	mg/kg	5	N.D.	N.D.	N.D.	N.D.	N.D.	/
Hexabromodiphenyl ether	mg/kg	5	N.D.	N.D.	N.D.	N.D.	N.D.	/
Heptabromodiphenyl ether	mg/kg	5	N.D.	N.D.	N.D.	N.D.	N.D.	/
Octabromodiphenyl ether	mg/kg	5	N.D.	N.D.	N.D.	N.D.	N.D.	/
Nonabromodiphenyl ether	mg/kg	5	N.D.	N.D.	N.D.	N.D.	N.D.	/
Decabromodiphenyl ether	mg/kg	5	N.D.	N.D.	N.D.	N.D.	N.D.	/
Total content	mg/kg	/	N.D.	N.D.	N.D.	N.D.	N.D.	≤1000
Conclusion	/	/	Pass	Pass	Pass	Pass	Pass	/



This document is issued by the Company subject to its General Conditions of service of service printed overleaf, available on request for electronic format documents, subject to terms and conditions for electronic documents is drawn to the limitation of liability indemnification and jurisdiction issues defined therein. any holder of this document is advised that information contained hereon reflects the company's findings at the time of its intervention only and within the limits of client's instructions, if any, the company's sole responsibility is to its client and this document does not exonerate parties to a transaction from exercising all their rights and obligations under the transaction documents. this document cannot be reproduced except in full, without prior written approval of the company. any unauthorized alteration, forgery or falsification of the content or appearance of this document is unlawful and offenders may be prosecuted to the fullest extent of the law, unless otherwise stated the results shown in this test report refer only to the sample(s) tested.



Shenzhen Deesev Testing International Corp.
 深圳市德泽威技术检测有限公司

9th Flr., Building B, Feiyang Science & Technology Park, Longchang Rd.No.8, Bao'an, Shenzhen, Guangdong, China
 中国 广东省 深圳市 宝安区 隆昌路 8号 飞扬科技园 B座9楼
 Tel: +86-0755-32936716, E-mail: DTI@deesev.cn



TEST REPORT

REPORT No.: **DTIBW20200954R**

Date: 2020-10-21

Page 14 of 26

Item	Unit	MDL	Results	Limit
			96	
Polybrominated Biphenyls (PBBs)				
Monobromobiphenyl	mg/kg	5	N.D.	/
Dibromobiphenyl	mg/kg	5	N.D.	/
Tribromobiphenyl	mg/kg	5	N.D.	/
Tetrabromobiphenyl	mg/kg	5	N.D.	/
Pentabromobiphenyl	mg/kg	5	N.D.	/
Hexabromobiphenyl	mg/kg	5	N.D.	/
Heptabromobiphenyl	mg/kg	5	N.D.	/
Octabromobiphenyl	mg/kg	5	N.D.	/
Nonabromodiphenyl	mg/kg	5	N.D.	/
Decabromodiphenyl	mg/kg	5	N.D.	/
Total content	mg/kg	/	N.D.	≤1000
Polybrominated Diphenylethers (PBDEs)(Mon-Deca)				
Monobromodiphenyl ether	mg/kg	5	N.D.	/
Dibromodiphenyl ether	mg/kg	5	N.D.	/
Tribromodiphenyl ether	mg/kg	5	N.D.	/
Tetrabromodiphenyl ether	mg/kg	5	N.D.	/
Pentabromodiphenyl ether	mg/kg	5	N.D.	/
Hexabromodiphenyl ether	mg/kg	5	N.D.	/
Heptabromodiphenyl ether	mg/kg	5	N.D.	/
Octabromodiphenyl ether	mg/kg	5	N.D.	/
Nonabromodiphenyl ether	mg/kg	5	N.D.	/
Decabromodiphenyl ether	mg/kg	5	N.D.	/
Total content	mg/kg	/	N.D.	≤1000
Conclusion	/	/	Pass	/

Note:

- N.D. = Not Detected or less than MDL
- mg/kg = ppm
- MDL = Method Detection Limit



This document is issued by the Company subject to its General Conditions of service of service printed overleaf, available on request for electronic format documents, subject to terms and conditions for electronic documents is drawn to the limitation of liability indemnification and jurisdiction issues defined therein, any holder of this document is advised that information contained hereon reflects the company's findings at the time of its intervention only and within the limits of client's instructions, if any, the company's sole responsibility is to its client and this document does not exonerate parties to transaction from exercising all their rights and obligations under the transaction documents, this document cannot be reproduced except in full, without prior written approval of the company, any unauthorized alteration, forgery or falsification of the content or appearance of this document is unlawful and offenders may be prosecuted to the fullest extent of the law, unless otherwise stated the results shown in this test report refer only to the sample(s) tested.



Shenzhen Deesev Testing International Corp.
 深圳市德泽威技术检测有限公司

9th Flr., Building B, Feiyang Science & Technology Park, Longchang Rd.No.8, Bao'an, Shenzhen, Guangdong, China
 中国广东省深圳市宝安区隆昌路8号飞扬科技园B座9楼
 Tel: +86-0755-32936716, E-mail: DTI@deesev.cn



TEST REPORT

REPORT No.: **DTIBW20200954R**

Date: 2020-10-21

Page 15 of 26

4) The test results of DEHP, BBP, DBP & DIBP

Item	Unit	MDL	Results					Limit
			1	2	3	5	6	
Di-2-ethylhexyl phthalate (DEHP)	mg/kg	30	N.D.	N.D.	N.D.	N.D.	N.D.	≤1000
Benzyl-n-butyl phthalate (BBP)	mg/kg	30	N.D.	N.D.	N.D.	N.D.	N.D.	≤1000
Di-n-butyl phthalate (DBP)	mg/kg	30	N.D.	N.D.	N.D.	N.D.	N.D.	≤1000
Di-iso-butyl phthalate (DIBP)	mg/kg	30	N.D.	N.D.	N.D.	N.D.	N.D.	≤1000
Conclusion	/	/	Pass	Pass	Pass	Pass	Pass	/

Item	Unit	MDL	Results					Limit
			7	8	11	13	16	
Di-2-ethylhexyl phthalate (DEHP)	mg/kg	30	N.D.	N.D.	N.D.	N.D.	N.D.	≤1000
Benzyl-n-butyl phthalate (BBP)	mg/kg	30	N.D.	N.D.	N.D.	N.D.	N.D.	≤1000
Di-n-butyl phthalate (DBP)	mg/kg	30	N.D.	N.D.	N.D.	N.D.	N.D.	≤1000
Di-iso-butyl phthalate (DIBP)	mg/kg	30	N.D.	N.D.	N.D.	N.D.	N.D.	≤1000
Conclusion	/	/	Pass	Pass	Pass	Pass	Pass	/

Item	Unit	MDL	Results					Limit
			18	19	20	21	22	
Di-2-ethylhexyl phthalate (DEHP)	mg/kg	30	N.D.	N.D.	N.D.	N.D.	N.D.	≤1000
Benzyl-n-butyl phthalate (BBP)	mg/kg	30	N.D.	N.D.	N.D.	N.D.	N.D.	≤1000
Di-n-butyl phthalate (DBP)	mg/kg	30	N.D.	N.D.	N.D.	N.D.	N.D.	≤1000
Di-iso-butyl phthalate (DIBP)	mg/kg	30	N.D.	N.D.	N.D.	N.D.	N.D.	≤1000
Conclusion	/	/	Pass	Pass	Pass	Pass	Pass	/



This document is issued by the Company subject to its General Conditions of service of service printed overleaf, available on request for electronic format documents, subject to terms and conditions for electronic documents is drawn to the limitation of liability indemnification and jurisdiction issues defined therein. any holder of this document is advised that information contained hereon reflects the company's findings at the time of its intervention only and within the limits of client's instructions, if any, the company's sole responsibility is to its client and this document does not exonerate parties to a transaction from exercising all their rights and obligations under the transaction documents. this document cannot be reproduced except in full, without prior written approval of the company. any unauthorized alteration, forgery or falsification of the content or appearance of this document is unlawful and offenders may be prosecuted to the fullest extent of the law unless otherwise stated the results shown in this test report refer only to the sample(s) tested.



Shenzhen Deesev Testing International Corp.
 深圳市德泽威技术检测有限公司

9th Flr., Building B, Feiyang Science & Technology Park, Longchang Rd. No.8, Bao'an, Shenzhen, Guangdong, China
 中国 广东省 深圳市 宝安区 隆昌路 8号 飞扬科技园 B座9楼
 Tel: +86-0755-32936716, E-mail: DTI@deesev.cn



TEST REPORT

REPORT No.: **DTIBW20200954R**

Date: 2020-10-21

Page 16 of 26

Item	Unit	MDL	Results					Limit
			23	25	27	28	29	
Di-2-ethylhexyl phthalate (DEHP)	mg/kg	30	N.D.	N.D.	N.D.	N.D.	N.D.	≤1000
Benzyl-n-butyl phthalate (BBP)	mg/kg	30	N.D.	N.D.	N.D.	N.D.	N.D.	≤1000
Di-n-butyl phthalate (DBP)	mg/kg	30	N.D.	N.D.	N.D.	N.D.	N.D.	≤1000
Di-iso-butyl phthalate (DIBP)	mg/kg	30	N.D.	N.D.	N.D.	N.D.	N.D.	≤1000
Conclusion	/	/	Pass	Pass	Pass	Pass	Pass	/

Item	Unit	MDL	Results					Limit
			30	32	35	36	38	
Di-2-ethylhexyl phthalate (DEHP)	mg/kg	30	N.D.	N.D.	N.D.	N.D.	N.D.	≤1000
Benzyl-n-butyl phthalate (BBP)	mg/kg	30	N.D.	N.D.	N.D.	N.D.	N.D.	≤1000
Di-n-butyl phthalate (DBP)	mg/kg	30	N.D.	N.D.	N.D.	N.D.	N.D.	≤1000
Di-iso-butyl phthalate (DIBP)	mg/kg	30	N.D.	N.D.	N.D.	N.D.	N.D.	≤1000
Conclusion	/	/	Pass	Pass	Pass	Pass	Pass	/

Item	Unit	MDL	Results					Limit
			39	40	41	43	44	
Di-2-ethylhexyl phthalate (DEHP)	mg/kg	30	N.D.	N.D.	N.D.	N.D.	N.D.	≤1000
Benzyl-n-butyl phthalate (BBP)	mg/kg	30	N.D.	N.D.	N.D.	N.D.	N.D.	≤1000
Di-n-butyl phthalate (DBP)	mg/kg	30	N.D.	N.D.	N.D.	N.D.	N.D.	≤1000
Di-iso-butyl phthalate (DIBP)	mg/kg	30	N.D.	N.D.	N.D.	N.D.	N.D.	≤1000
Conclusion	/	/	Pass	Pass	Pass	Pass	Pass	/



This document is issued by the Company subject to its General Conditions of service of service printed overleaf, available on request for electronic format documents, subject to terms and conditions for electronic documents is drawn to the limitation of liability indemnification and jurisdiction issues defined therein. any holder of this document is advised that information contained hereon reflects the company's findings at the time of its intervention only and within the limits of client's instructions, if any, the company's sole responsibility is to its client and this document does not exonerate parties to a transaction from exercising all their rights and obligations under the transaction documents. this document cannot be reproduced except in full, without prior written approval of the company. any unauthorized alteration, forgery or falsification of the content or appearance of this document is unlawful and offenders may be prosecuted to the fullest extent of the law unless otherwise stated the results shown in this test report refer only to the sample(s) tested.



Shenzhen Deesev Testing International Corp.
 深圳市德泽威技术检测有限公司

9th Flr., Building B, Feiyang Science & Technology Park, Longchang Rd. No.8, Bao'an, Shenzhen, Guangdong, China
 中国 广东省 深圳市 宝安区 隆昌路 8号 飞扬科技园 B座9楼
 Tel: +86-0755-32936716, E-mail: DTI@deesev.cn



TEST REPORT

REPORT No.: **DTIBW20200954R**

Date: 2020-10-21

Page 17 of 26

Item	Unit	MDL	Results					Limit
			46	47	48	49	50	
Di-2-ethylhexyl phthalate (DEHP)	mg/kg	30	N.D.	N.D.	N.D.	N.D.	N.D.	≤1000
Benzyl-n-butyl phthalate (BBP)	mg/kg	30	N.D.	N.D.	N.D.	N.D.	N.D.	≤1000
Di-n-butyl phthalate (DBP)	mg/kg	30	N.D.	N.D.	N.D.	N.D.	N.D.	≤1000
Di-iso-butyl phthalate (DIBP)	mg/kg	30	N.D.	N.D.	N.D.	N.D.	N.D.	≤1000
Conclusion	/	/	Pass	Pass	Pass	Pass	Pass	/

Item	Unit	MDL	Results					Limit
			51	52	53	54	55	
Di-2-ethylhexyl phthalate (DEHP)	mg/kg	30	N.D.	N.D.	N.D.	N.D.	N.D.	≤1000
Benzyl-n-butyl phthalate (BBP)	mg/kg	30	N.D.	N.D.	N.D.	N.D.	N.D.	≤1000
Di-n-butyl phthalate (DBP)	mg/kg	30	N.D.	N.D.	N.D.	N.D.	N.D.	≤1000
Di-iso-butyl phthalate (DIBP)	mg/kg	30	N.D.	N.D.	N.D.	N.D.	N.D.	≤1000
Conclusion	/	/	Pass	Pass	Pass	Pass	Pass	/

Item	Unit	MDL	Results					Limit
			56	58	60	61	63	
Di-2-ethylhexyl phthalate (DEHP)	mg/kg	30	N.D.	N.D.	N.D.	N.D.	N.D.	≤1000
Benzyl-n-butyl phthalate (BBP)	mg/kg	30	N.D.	N.D.	N.D.	N.D.	N.D.	≤1000
Di-n-butyl phthalate (DBP)	mg/kg	30	N.D.	N.D.	N.D.	N.D.	N.D.	≤1000
Di-iso-butyl phthalate (DIBP)	mg/kg	30	N.D.	N.D.	N.D.	N.D.	N.D.	≤1000
Conclusion	/	/	Pass	Pass	Pass	Pass	Pass	/



This document is issued by the Company subject to its General Conditions of service of service printed overleaf, available on request for electronic format documents, subject to terms and conditions for electronic documents is drawn to the limitation of liability indemnification and jurisdiction issues defined therein. any holder of this document is advised that information contained hereon reflects the company's findings at the time of its intervention only and within the limits of client's instructions, if any, the company's sole responsibility is to its client and this document does not exonerate parties to transaction from exercising all their rights and obligations under the transaction documents. this document cannot be reproduced except in full, without prior written approval of the company. any unauthorized alteration, forgery or falsification of the content or appearance of this document is unlawful and offenders may be prosecuted to the fullest extent of the law unless otherwise stated the results shown in this test report refer only to the sample(s) tested.



Shenzhen Deesev Testing International Corp.
 深圳市德泽威技术检测有限公司

9th Flr., Building B, Feiyang Science & Technology Park, Longchang Rd.No.8,Bao'an,Shenzhen, Guangdong, China
 中国 广东省 深圳市 宝安区 隆昌路 8号 飞扬科技园 B座9楼
 Tel: +86-0755-32936716, E-mail: DTI@deesev.cn



TEST REPORT

REPORT No.: **DTIBW20200954R**

Date: 2020-10-21

Page 18 of 26

Item	Unit	MDL	Results					Limit
			65	67	68	70	72	
Di-2-ethylhexyl phthalate (DEHP)	mg/kg	30	N.D.	N.D.	N.D.	N.D.	N.D.	≤1000
Benzyl-n-butyl phthalate (BBP)	mg/kg	30	N.D.	N.D.	N.D.	N.D.	N.D.	≤1000
Di-n-butyl phthalate (DBP)	mg/kg	30	N.D.	N.D.	N.D.	N.D.	N.D.	≤1000
Di-iso-butyl phthalate (DIBP)	mg/kg	30	N.D.	N.D.	N.D.	N.D.	N.D.	≤1000
Conclusion	/	/	Pass	Pass	Pass	Pass	Pass	/

Item	Unit	MDL	Results					Limit
			74	75	76	77	78	
Di-2-ethylhexyl phthalate (DEHP)	mg/kg	30	N.D.	N.D.	N.D.	N.D.	N.D.	≤1000
Benzyl-n-butyl phthalate (BBP)	mg/kg	30	N.D.	N.D.	N.D.	N.D.	N.D.	≤1000
Di-n-butyl phthalate (DBP)	mg/kg	30	N.D.	N.D.	N.D.	N.D.	N.D.	≤1000
Di-iso-butyl phthalate (DIBP)	mg/kg	30	N.D.	N.D.	N.D.	N.D.	N.D.	≤1000
Conclusion	/	/	Pass	Pass	Pass	Pass	Pass	/

Item	Unit	MDL	Results					Limit
			79	80	83	84	85	
Di-2-ethylhexyl phthalate (DEHP)	mg/kg	30	N.D.	N.D.	N.D.	N.D.	N.D.	≤1000
Benzyl-n-butyl phthalate (BBP)	mg/kg	30	N.D.	N.D.	N.D.	N.D.	N.D.	≤1000
Di-n-butyl phthalate (DBP)	mg/kg	30	N.D.	N.D.	N.D.	N.D.	N.D.	≤1000
Di-iso-butyl phthalate (DIBP)	mg/kg	30	N.D.	N.D.	N.D.	N.D.	N.D.	≤1000
Conclusion	/	/	Pass	Pass	Pass	Pass	Pass	/



This document is issued by the Company subject to its General Conditions of service of service printed overleaf, available on request for electronic format documents, subject to terms and conditions for electronic documents is drawn to the limitation of liability indemnification and jurisdiction issues defined therein. any holder of this document is advised that information contained hereon reflects the company's findings at the time of its intervention only and within the limits of client's instructions, if any, the company's sole responsibility is to its client and this document does not exonerate parties to transaction from exercising all their rights and obligations under the transaction documents. this document cannot be reproduced except in full, without prior written approval of the company. any unauthorized alteration, forgery or falsification of the content or appearance of this document is unlawful and offenders may be prosecuted to the fullest extent of the law, unless otherwise stated the results shown in this test report refer only to the sample(s) tested.



Shenzhen Deesev Testing International Corp.
 深圳市德泽威技术检测有限公司

9th Flr., Building B, Feiyang Science & Technology Park, Longchang Rd. No.8, Bao'an, Shenzhen, Guangdong, China
 中国 广东省 深圳市 宝安区 隆昌路 8号 飞扬科技园 B座9楼
 Tel: +86-0755-32936716, E-mail: DTI@deesev.cn



TEST REPORT

REPORT No.: **DTIBW20200954R**

Date: 2020-10-21

Page 19 of 26

Item	Unit	MDL	Results					Limit
			87	88	90	91	92	
Di-2-ethylhexyl phthalate (DEHP)	mg/kg	30	N.D.	N.D.	N.D.	N.D.	N.D.	≤1000
Benzyl-n-butyl phthalate (BBP)	mg/kg	30	N.D.	N.D.	N.D.	N.D.	N.D.	≤1000
Di-n-butyl phthalate (DBP)	mg/kg	30	N.D.	N.D.	N.D.	N.D.	N.D.	≤1000
Di-iso-butyl phthalate (DIBP)	mg/kg	30	N.D.	N.D.	N.D.	N.D.	N.D.	≤1000
Conclusion	/	/	Pass	Pass	Pass	Pass	Pass	/

Item	Unit	MDL	Results					Limit
			94	96	98	99	100	
Di-2-ethylhexyl phthalate (DEHP)	mg/kg	30	N.D.	N.D.	N.D.	N.D.	N.D.	≤1000
Benzyl-n-butyl phthalate (BBP)	mg/kg	30	N.D.	N.D.	N.D.	N.D.	N.D.	≤1000
Di-n-butyl phthalate (DBP)	mg/kg	30	N.D.	N.D.	N.D.	N.D.	N.D.	≤1000
Di-iso-butyl phthalate (DIBP)	mg/kg	30	N.D.	N.D.	N.D.	N.D.	N.D.	≤1000
Conclusion	/	/	Pass	Pass	Pass	Pass	Pass	/

Item	Unit	MDL	Results					Limit
			101	102	104	105	106	
Di-2-ethylhexyl phthalate (DEHP)	mg/kg	30	N.D.	N.D.	N.D.	N.D.	N.D.	≤1000
Benzyl-n-butyl phthalate (BBP)	mg/kg	30	N.D.	N.D.	N.D.	N.D.	N.D.	≤1000
Di-n-butyl phthalate (DBP)	mg/kg	30	N.D.	N.D.	N.D.	N.D.	N.D.	≤1000
Di-iso-butyl phthalate (DIBP)	mg/kg	30	N.D.	N.D.	N.D.	N.D.	N.D.	≤1000
Conclusion	/	/	Pass	Pass	Pass	Pass	Pass	/



This document is issued by the Company subject to its General Conditions of service of service printed overleaf, available on request for electronic format documents, subject to terms and conditions for electronic documents is drawn to the limitation of liability indemnification and jurisdiction issues defined therein. any holder of this document is advised that information contained hereon reflects the company's findings at the time of its intervention only and within the limits of client's instructions, if any, the company's sole responsibility is to its client and this document does not exonerate parties to transaction from exercising all their rights and obligations under the transaction documents. this document cannot be reproduced except in full, without prior written approval of the company. any unauthorized alteration, forgery or falsification of the content or appearance of this document is unlawful and offenders may be prosecuted to the fullest extent of the law, unless otherwise stated the results shown in this test report refer only to the sample(s) tested.



Shenzhen Deesev Testing International Corp.
 深圳市德泽威技术检测有限公司

9th Flr., Building B, Feiyang Science & Technology Park, Longchang Rd.No.8,Bao'an,Shenzhen, Guangdong, China
 中国 广东省 深圳市 宝安区 隆昌路 8号 飞扬科技园 B座9楼
 Tel: +86-0755-32936716, E-mail: DTI@deesev.cn



TEST REPORT

REPORT No.: **DTIBW20200954R**

Date: 2020-10-21

Page 20 of 26

Item	Unit	MDL	Results	Limit
			107	
Di-2-ethylhexyl phthalate (DEHP)	mg/kg	30	N.D.	≤1000
Benzyl-n-butyl phthalate (BBP)	mg/kg	30	N.D.	≤1000
Di-n-butyl phthalate (DBP)	mg/kg	30	N.D.	≤1000
Di-iso-butyl phthalate (DIBP)	mg/kg	30	N.D.	≤1000
Conclusion	/	/	Pass	/

Note:

- N.D. = Not Detected or less than MDL
- mg/kg = ppm
- MDL = Method Detection Limit
- Flow chart appendix is included.
- Photo appendix is included.



This document is issued by the Company subject to its General Conditions of service of service printed overleaf, available on request for electronic format documents, subject to terms and conditions for electronic documents is drawn to the limitation of liability indemnification and jurisdiction issues defined therein. any holder of this document is advised that information contained hereon reflects the company's findings at the time of its intervention only and within the limits of client's instructions, if any, the company's sole responsibility is to its client and this document does not exonerate parties to a transaction from exercising all their rights and obligations under the transaction documents. this document cannot be reproduced except in full, without prior written approval of the company. any unauthorized alteration, forgery or falsification of the content or appearance of this document is unlawful and offenders may be prosecuted to the fullest extent of the law unless otherwise stated the results shown in this test report refer only to the sample(s) tested.



Shenzhen Deesev Testing International Corp.
 深圳市德泽威技术检测有限公司

9th Flr., Building B, Feiyang Science & Technology Park, Longchang Rd.No.8, Bao'an, Shenzhen, Guangdong, China
 中国 广东省 深圳市 宝安区 隆昌路 8号 飞扬科技园 B座9楼
 Tel: +86-0755-32936716, E-mail: DTI@deesev.cn



TEST REPORT

REPORT No.: **DTIBW20200954R**

Date: 2020-10-21

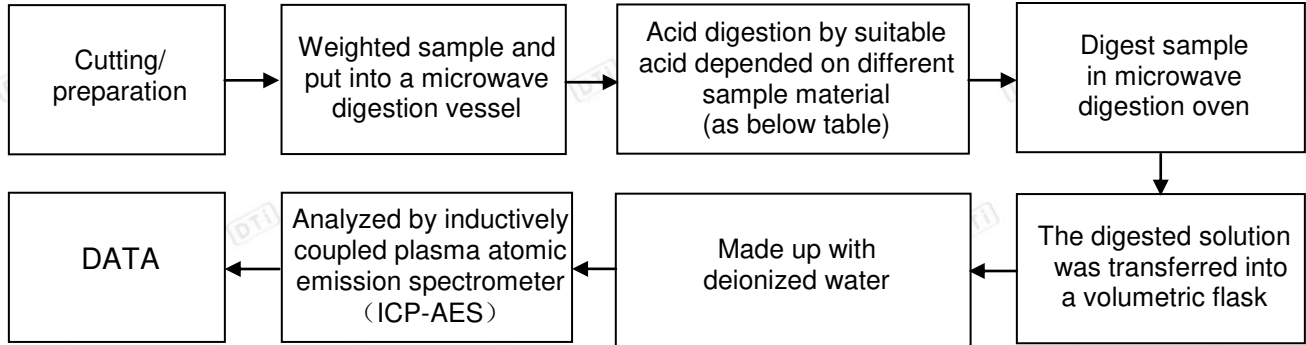
Page 21 of 26

Appendix I

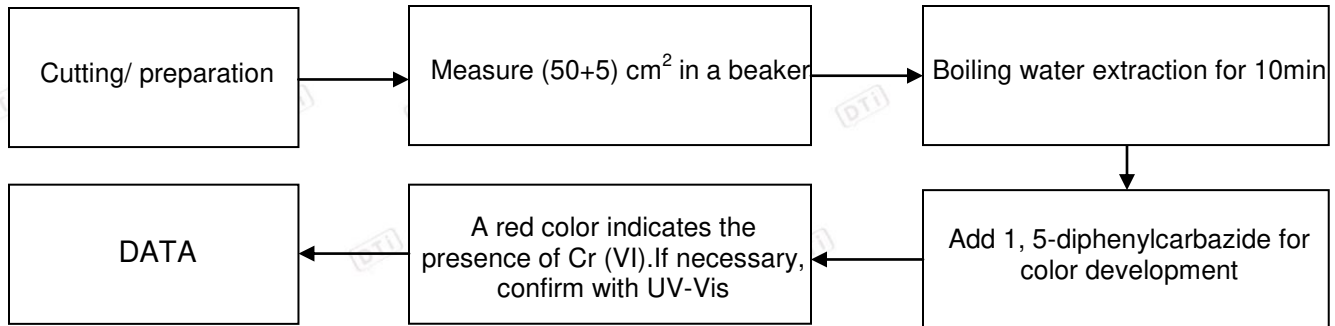
Test Flow chart

1. Test Flowchart for Cd / Pb /Hg content

These samples were dissolved totally by pre-conditioning method according to below flow chart.



2. Test Flowchart for Cr⁶⁺ content (Metal material)





This document is issued by the Company subject to its General Conditions of service of service printed overleaf, available on request for electronic format documents, subject to terms and conditions for electronic documents is drawn to the limitation of liability indemnification and jurisdiction issues defined therein. any holder of this document is advised that information contained hereon reflects the company's findings at the time of its intervention only and within the limits of client's instructions, if any, the company's sole responsibility is to its client and this document does not exonerate parties to a transaction from exercising all their rights and obligations under the transaction documents. this document cannot be reproduced except in full, without prior written approval of the company. any unauthorized alteration, forgery or falsification of the content or appearance of this document is unlawful and offenders may be prosecuted to the fullest extent of the law unless otherwise stated the results shown in this test report refer only to the sample(s) tested.





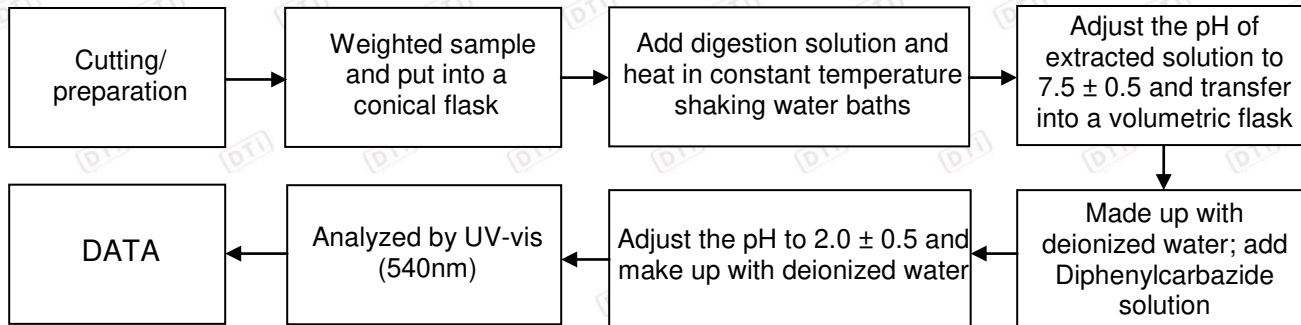
TEST REPORT

REPORT No.: **DTIBW20200954R**

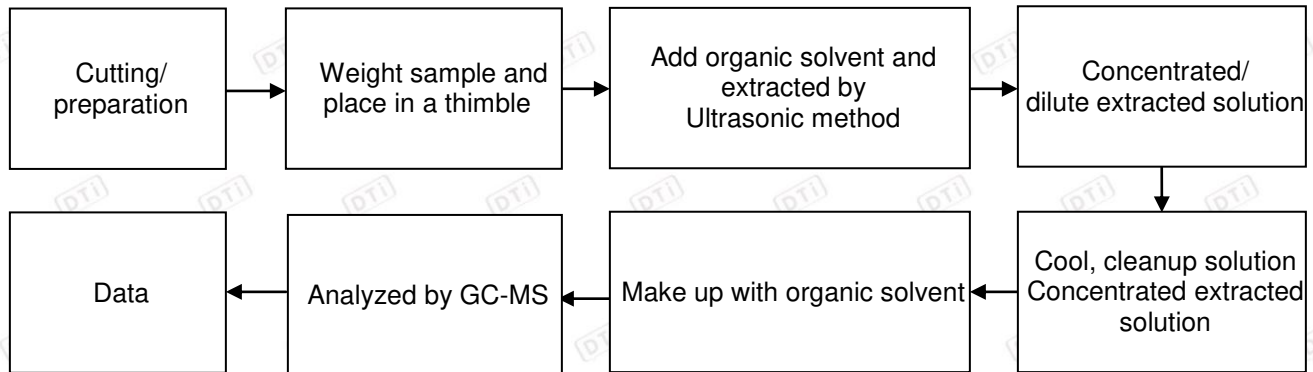
Date: 2020-10-21

Page 22 of 26

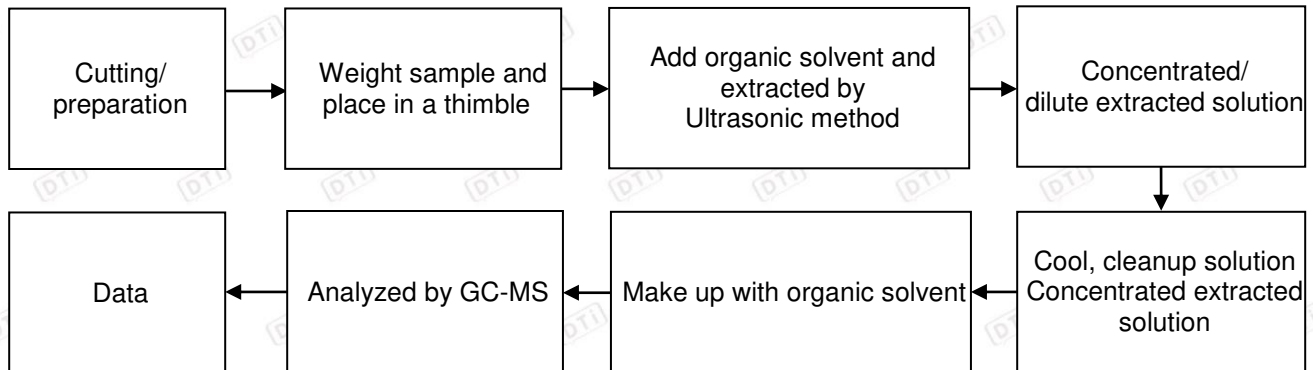
3. Test Flowchart for Cr⁶⁺ content (Non-metal material)



4. Test Flowchart for PBBs & PBDEs content



5. Test Flowchart for DEHP, BBP, DBP & DIBP content





This document is issued by the Company subject to its General Conditions of service of service printed overleaf, available on request for electronic format documents, subject to terms and conditions for electronic documents is drawn to the limitation of liability indemnification and jurisdiction issues defined therein, any holder of this document is advised that information contained hereon reflects the company's findings at the time of its intervention only and within the limits of client's instructions, if any, the company's sole responsibility is to its client and this document does not exonerate parties to transaction from exercising all their rights and obligations under the transaction documents, this document cannot be reproduced except in full, without prior written approval of the company, any unauthorized alteration, forgery or falsification of the content or appearance of this document is unlawful and offenders may be prosecuted to the fullest extent of the law, unless otherwise stated the results shown in this test report refer only to the sample(s) tested.





TEST REPORT

REPORT No.: **DTIBW20200954R**

Date: 2020-10-21

Page 23 of 26

Table:

Sample material	Digestion Acid
Steel, copper, aluminum, solder	Aqua regia, HNO ₃ , HCl, HF, H ₂ O ₂
Glass	HNO ₃ /HF
Gold, platinum, palladium, ceramic	Aqua regia
Silver	HNO ₃
Plastic	H ₂ SO ₄ , H ₂ O ₂ , HNO ₃ , HCl
Others	Any acid to total digestion



This document is issued by the Company subject to its General Conditions of service of service printed overleaf, available on request for electronic format documents, subject to terms and conditions for electronic documents is drawn to the limitation of liability indemnification and jurisdiction issues defined therein. any holder of this document is advised that information contained hereon reflects the company's findings at the time of its intervention only and within the limits of client's instructions, if any, the company's sole responsibility is to its client and this document does not exonerate parties to a transaction from exercising all their rights and obligations under the transaction documents. this document cannot be reproduced except in full, without prior written approval of the company. any unauthorized alteration, forgery or falsification of the content or appearance of this document is unlawful and offenders may be prosecuted to the fullest extent of the law unless otherwise stated the results shown in this test report refer only to the sample(s) tested.

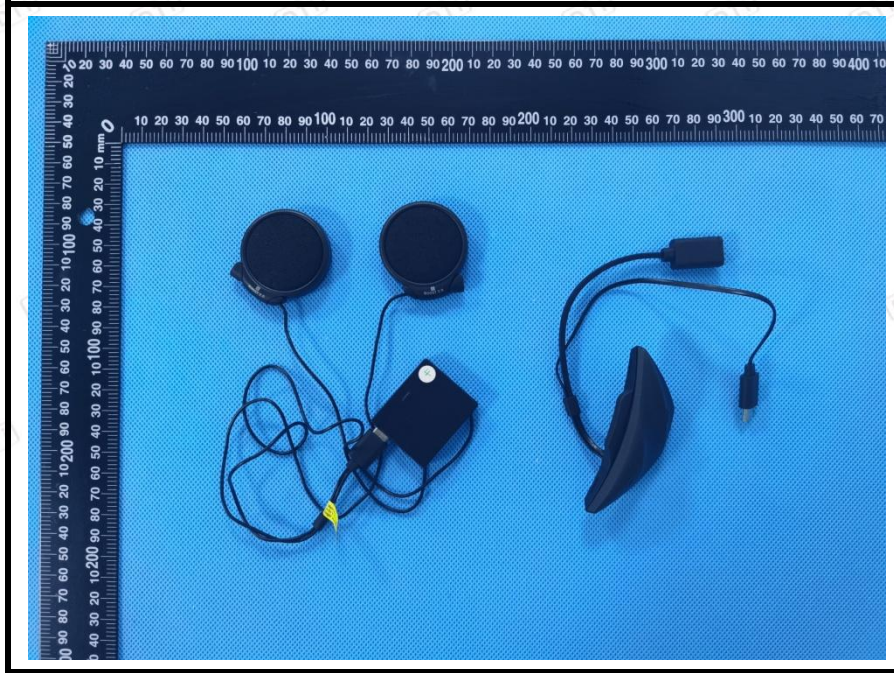


Shenzhen Deesev Testing International Corp.
 深圳市德泽威技术检测有限公司

9th Flr., Building B, Feiyang Science & Technology Park, Longchang Rd.No.8,Bao'an,Shenzhen, Guangdong, China
 中国 广东省 深圳市 宝安区 隆昌路 8号 飞扬科技园 B座9楼
 Tel: +86-0755-32936716, E-mail: DTI@deesev.cn

Appendix II

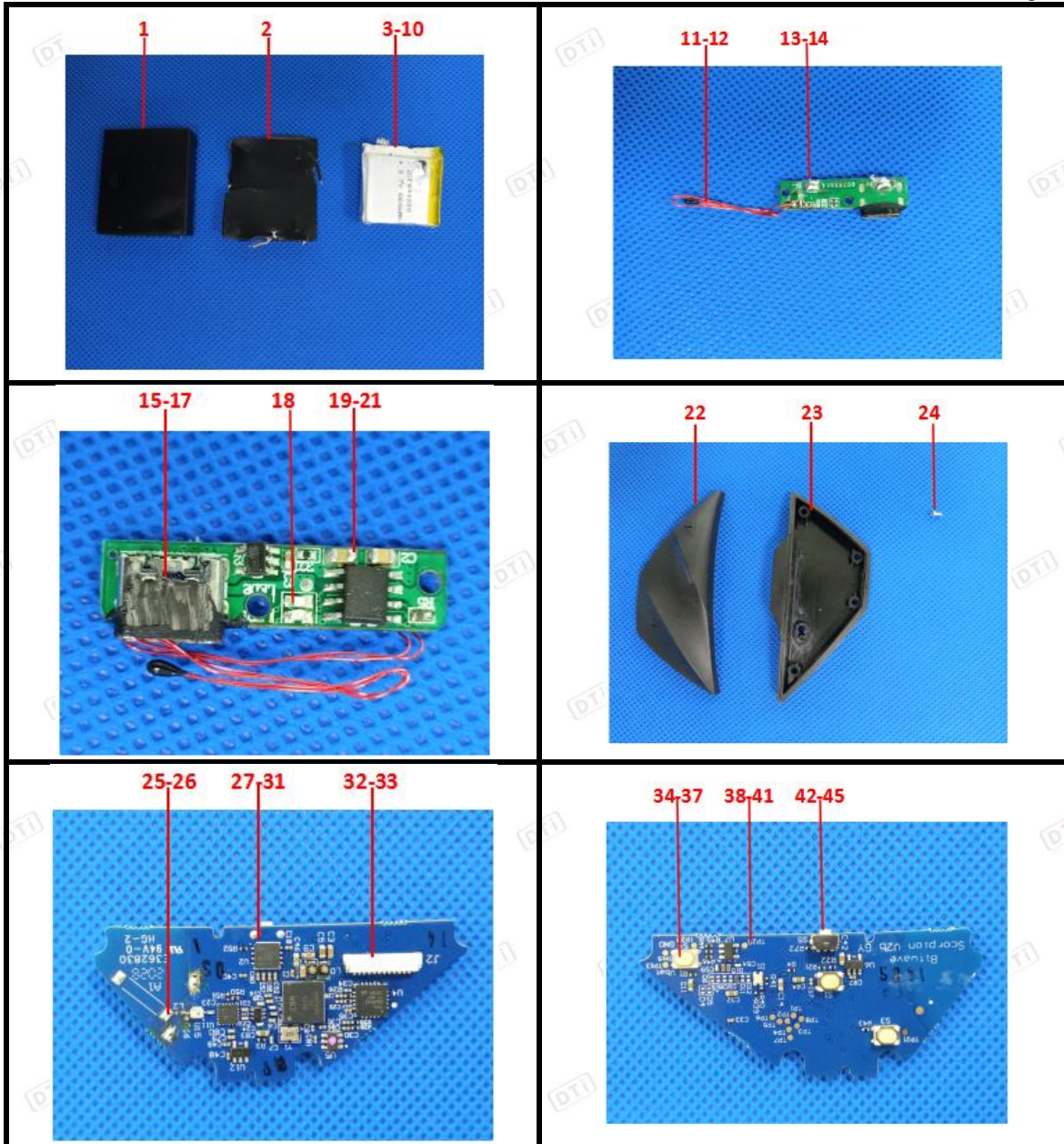
Photograph of Sample





This document is issued by the Company subject to its General Conditions of service of service printed overleaf, available on request for electronic format documents, subject to terms and conditions for electronic documents is drawn to the limitation of liability indemnification and jurisdiction issues defined therein. any holder of this document is advised that information contained hereon reflects the company's findings at the time of its intervention only and within the limits of client's instructions, if any, the company's sole responsibility is to its client and this document does not exonerate parties to a transaction from exercising all their rights and obligations under the transaction documents. this document cannot be reproduced except in full, without prior written approval of the company. any unauthorized alteration, forgery or falsification of the content or appearance of this document is unlawful and offenders may be prosecuted to the fullest extent of the law unless otherwise stated the results shown in this test report refer only to the sample(s) tested.

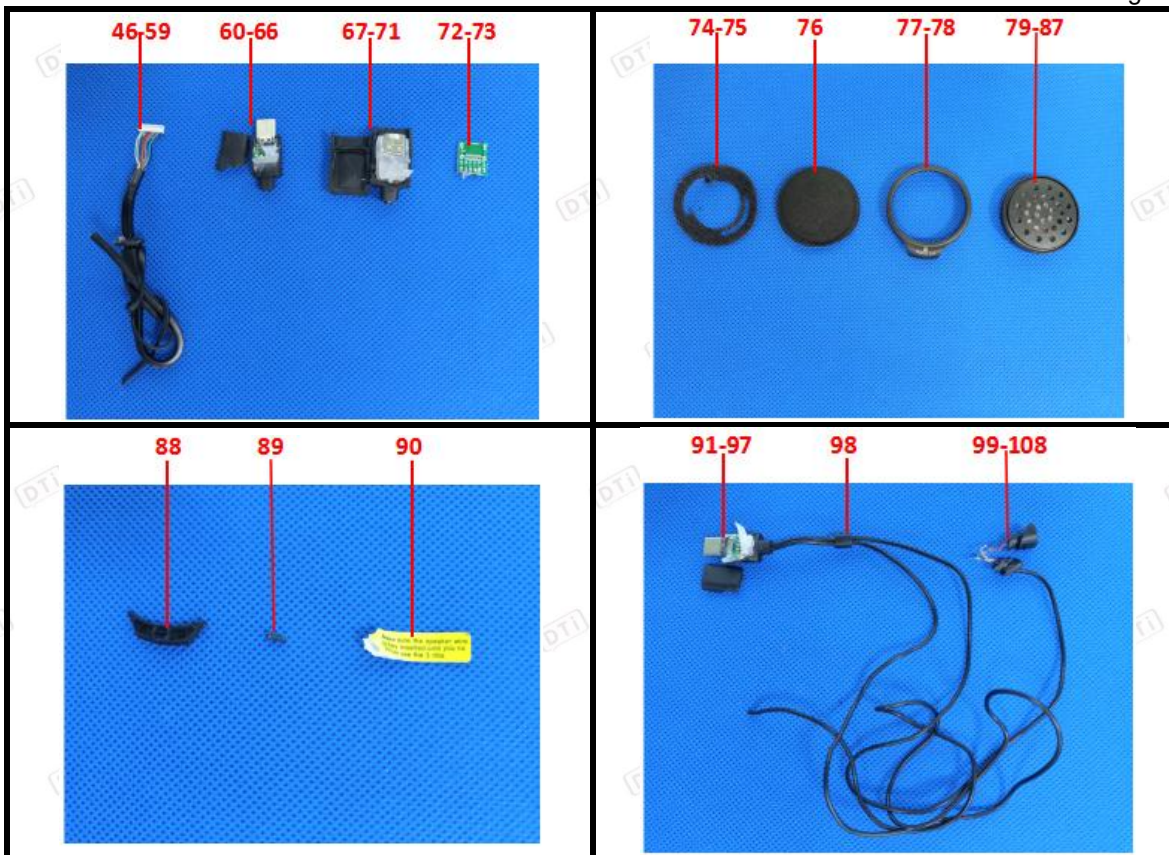






This document is issued by the Company subject to its General Conditions of service of service printed overleaf, available on request for electronic format documents, subject to terms and conditions for electronic documents is drawn to the limitation of liability indemnification and jurisdiction issues defined therein. any holder of this document is advised that information contained hereon reflects the company's findings at the time of its intervention only and within the limits of client's instructions, if any, the company's sole responsibility is to its client and this document does not exonerate parties to a transaction from exercising all their rights and obligations under the transaction documents. this document cannot be reproduced except in full, without prior written approval of the company. any unauthorized alteration, forgery or falsification of the content or appearance of this document is unlawful and offenders may be prosecuted to the fullest extent of the law unless otherwise stated the results shown in this test report refer only to the sample(s) tested.





*** End of Report ***



This document is issued by the Company subject to its General Conditions of service of service printed overleaf, available on request for electronic format documents, subject to terms and conditions for electronic documents is drawn to the limitation of liability indemnification and jurisdiction issues defined therein, any holder of this document is advised that information contained hereon reflects the company's findings at the time of its intervention only and within the limits of client's instructions, if any, the company's sole responsibility is to its client and this document does not exonerate parties to a transaction from exercising all their rights and obligations under the transaction documents, this document cannot be reproduced except in full, without prior written approval of the company, any unauthorized alteration, forgery or falsification of the content or appearance of this document is unlawful and offenders may be prosecuted to the fullest extent of the law, unless otherwise stated the results shown in this test report refer only to the sample(s) tested.

